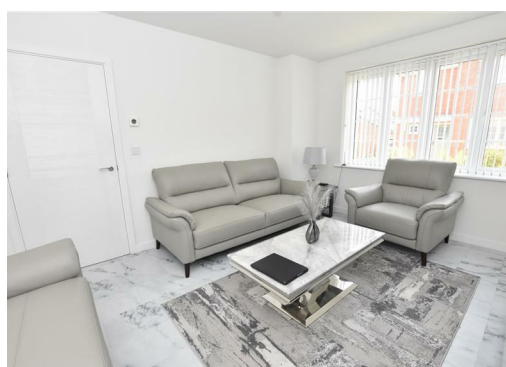




Dilkes Drive, Leicester, LE2 4WF

£409,950

Attractive and superbly presented 4 bedroom detached family home situated on Weston Rise in Oadby. This freehold four-bedroom detached home offers well-balanced accommodation across two floors, driveway parking, a garage and a private rear garden. The property is positioned within reach of well-regarded local schooling and everyday amenities.



4 Dilkes Drive, Oadby, Leicester, LE2 4WF

ENTRANCE HALL

Stairs to first floor, tiled flooring

LIVING ROOM

Double glazed window tiled flooring

KITCHEN DINING ROOM

fitted with a range of contemporary wall and base units with integrated double oven, gas hob with extractor above, fridge-freezer and dishwasher. French doors open directly onto the rear garden, providing natural light and direct access to the patio area.

CLOAKROOM

Low level wc. wash hand basin. tiled surrounds

FIRST FLOOR LANDING

Loft acces, carpet flooring

MAIN BEDROOM

Double glazed window, carpet flooring

EN SUITE

Shower enclosure, low level wc, wash hand basin, tiled surrounds

BATHROOM

Matching white bathroom suite with tiled surrounds

BEDROOM

Double glazed window carpet flooring

BEDROOM

Double glazed window carpet flooring

BEDROOM

Double glazed window carpet flooring

OUTSIDE

Single garage with private rear gardens





